



~~e~~xpēdo™

Version 2.7

DICOM 3.0 Conformance Statement

1. Conformance Statement Overview

<i>Table 1.1 Network Services</i>		
<i>SOP Classes</i>	<i>User of Service (SCU)</i>	<i>Provider of Service (SCP)</i>
Query and Retrieve		
Study Root Query/Retrieve Information Model—Find	Yes	Yes
Study Root Query/Retrieve Information Model—Move	Yes	Yes
Transfer		
12-Lead ECG Waveform	Yes	Yes
Ambulatory ECG Waveform	Yes	Yes
Basic Text SR	Yes	Yes
Basic Voice Audio Waveform	Yes	Yes
Cardiac Electrophysiology Waveform	Yes	Yes
Comprehensive SR	Yes	Yes
Computed Radiography Image Storage	Yes	Yes
CT Image Storage	Yes	Yes
Digital Intra-oral X-Ray Image Storage (Presentation)	Yes	Yes
Digital Intra-oral X-Ray Image Storage (Processing)	Yes	Yes
Digital Mammography Image Storage (Presentation)	Yes	Yes
Digital Mammography Image Storage (Processing)	Yes	Yes
Digital X-Ray Image Storage (Presentation)	Yes	Yes
Digital X-Ray Image Storage (Processing)	Yes	Yes
Encapsulated PDF Storage SOP Class	Yes	Yes
Enhanced MR Image Storage	Yes	Yes
Enhanced SR	Yes	Yes
General ECG Waveform	Yes	Yes
Grayscale Softcopy Presentation State Storage	Yes	Yes
Hardcopy Color Image Storage	Yes	Yes
Hardcopy Grayscale Image Storage	Yes	Yes
Hemodynamic Waveform	Yes	Yes
Key Image Object Storage SOP Class	Yes	Yes
Key Image Object Storage SOP Class	Yes	Yes

MR Image Storage	Yes	Yes
Multi-frame Grayscale Byte Secondary Capture Image Storage	Yes	Yes
Multi-frame Grayscale Word Secondary Capture Image Storage	Yes	Yes
Multi-frame Single Bit Secondary Capture Image Storage	Yes	Yes
Multi-frame True Color Secondary Capture Image Storage	Yes	Yes
Nuclear Medicine Image Storage	Yes	Yes
Ophthalmic Photography IOD 16 Bit Image Storage	Yes	Yes
Ophthalmic Photography IOD 8 Bit Image Storage	Yes	Yes
Positron Emission Tomography Image Storage	Yes	Yes
RT Beams Treatment Record Storage	Yes	Yes
RT Brachy Treatment Record Storage	Yes	Yes
RT Dose Storage	Yes	Yes
RT Image Storage	Yes	Yes
RT Plan Storage	Yes	Yes
RT Structure Set Storage	Yes	Yes
RT Treatment Summary Record Storage	Yes	Yes
Secondary Capture Image Storage	Yes	Yes
Stand-alone Curve Storage	Yes	Yes
Stand-alone Modality LUT Storage	Yes	Yes
Stand-alone Overlay Storage	Yes	Yes
Standalone PET Curve Storage	Yes	Yes
Stand-alone VOI LUT Storage	Yes	Yes
Stereometric Relationship Image Storage	Yes	Yes
Stored Print Storage	Yes	Yes
Ultrasound Image Storage	Yes	Yes
Ultrasound Image Storage	Yes	Yes
Ultrasound Multi-frame Image Storage	Yes	Yes
Video Endoscopic Storage SOP Class	Yes	Yes
VL Endoscopic Image Storage	Yes	Yes
VL Microscopic Image	Yes	Yes
VL Photographic Image Storage	Yes	Yes
VL Slide	Yes	Yes

X-Ray Angiographic Image Storage	Yes	Yes
X-Ray Radiofluoroscopic Image Storage	Yes	Yes
Verification		
Verification	Yes	Yes

Table 1.2
Media Services

<i>Media Storage Application Profile</i>	<i>Write Files (FSC)</i>	<i>Read Files (FSR)</i>
CD—Recordable		
General Purpose CD-R	See conformance note	Yes
General Purpose Secure CD-R	See conformance note	No
DVD—Recordable		
General Purpose DVD-R	See conformance note	No
General Purpose Secure DVD-R	See conformance note	No

2. Table of Contents

1.	Conformance Statement Overview	3
3.	Introduction	9
3.1.	Revision History	9
3.2.	Legal Notices	9
3.2.1.	Copyright Notice	9
3.2.2.	Trademark Acknowledgements	9
3.2.3.	Contact Address	9
3.3.	Definitions, Terms and Abbreviations.....	9
3.4.	References	10
4.	Implementation Model.....	11
4.1.	Storage SCP AE	11
4.1.1.	Application Data Flow Diagram.....	11
4.1.2.	Functional Definition of AE	11
4.1.3.	Sequencing of Real World Activities	11
4.2.	Storage SCU AE	12
4.2.1.	Application Data Flow Diagram.....	12
4.2.2.	Functional Definition of AE	12
4.2.3.	Sequencing of Real World Activities	12
4.3.	DICOM DISC Writer AE.....	13
4.3.1.	Application Data Flow Diagram.....	13
4.3.2.	Functional Definition of AE	13
4.3.3.	Sequencing of Real World Activities	13
4.4.	Query and Retrieve SCU AE.....	14
4.4.1.	Application Data Flow Diagram.....	14
4.4.2.	Functional Definitions of AE.....	14
4.4.3.	Sequencing of Real World Activities	15
4.5.	Query and Retrieve SCP AE	16
4.5.1.	Application Data Flow Diagram.....	16
4.5.2.	Functional Definitions of AE.....	16
4.5.3.	Sequencing of Real World Activities	17
4.6.	Importer AE.....	18

4.6.1.	Application Data Flow Diagram.....	18
4.6.2.	Functional Definitions of AE.....	18
4.6.3.	Sequencing of Real World Activities	19
4.7.	Verification AE.....	20
4.7.1.	Application Data Flow Diagram.....	20
4.7.2.	Functional Definitions of AE.....	20
4.7.3.	Sequencing of Real World Activities	20
5.	AE Specifications	21
5.1.	Storage SCP AE	21
5.1.1.	SOP Classes	21
5.1.2.	Association Establishment Policies	22
5.1.3.	Association Initiation by Real World Activity.....	23
5.1.4.	Association Acceptance Policy	23
5.2.	Storage SCU AE	25
5.2.1.	SOP Classes	25
5.2.2.	Association Establishment Policies	26
5.2.3.	Association Initiation by Real World Activity.....	27
5.2.4.	Association Acceptance Policy	28
5.3.	DICOM DISC Writer AE.....	29
5.3.2.	File Meta Information	29
5.3.3.	Real World Activity—Store Images on DICOM DISC.....	29
5.4.	Query and Retrieve SCU AE.....	33
5.4.1.	SOP Classes	33
5.4.2.	Association Establishment Policies	33
5.4.3.	Association Initiation by Real World Activity.....	34
5.4.4.	Sop Specific Conformance to C-Move SOP Class	35
5.4.5.	Association Acceptance Policy	35
5.5.	Query and Retrieve SCP AE	36
5.5.1.	SOP Classes	36
5.5.2.	Association Establishment Policies	36
5.5.3.	Association Initiation by Real World Activity.....	36
5.5.4.	Association Acceptance for Real World Activity	36

5.6.	Importer AE.....	39
5.6.2.	Initiation by Real World Activity—Import Images	39
5.7.	Verification AE.....	43
5.7.1.	SOP Classes	43
5.7.2.	Association Establishment Policies	43
5.7.3.	Association Initiation by Real World Activity.....	44
5.7.4.	Association Acceptance for Real World Activity—Accept Verification.....	44
6.	Communication Profiles.....	46
6.1.	Supported Communication Stacks.....	46
6.2.	TCP/IP Stack	46
6.3.	API	46
6.4.	Physical Media Support	46
7.	Support of Extended Character Sets.....	47
8.	Configuration	48
8.1.	Configurable Parameters	48
8.1.1.	Host Configuration	48
8.1.2.	Storage SCP AE	48
8.1.3.	Query and Retrieve SCU AE.....	48
8.1.4.	Query and Retrieve SCP AE	48
8.1.5.	Peer Configuration	48
9.	Security	49
9.1.	Security Profiles	49
9.2.	Association Level Security.....	49
9.3.	Application Level Security.....	49

3. Introduction

This document describes the conformance of the eXpedo Application Suite to the DICOM 3.0 Standard [DICOM].

3.1. Revision History

Revision	Author	Comments	Date
1	Matthew Gray	Created	05/20/2006
2	Matthew Gray	Updated	06/29/2006
3	Timothy Krehl	Updated	06/10/2008
4	Dion Barrier	Updated	07/07/2009

3.2. Legal Notices

3.2.1. Copyright Notice

©2009 Sorna Corporation. All rights reserved.

- No part of this document may be copied or reprinted, in whole or part, without written permission.
- The contents of this document are subject to change without notice or legal obligation.

3.2.2. Trademark Acknowledgements

eXpedo is a registered trademark of Sorna Corporation. Windows is a registered trademark of Microsoft Corporation in the United States and other countries. This document may include trademarks or registered trademarks of other companies.

3.2.3. Contact Address

Sorna Corporation
2020 Silver Bell Road
Suite 17
Eagan, MN 55122

3.3. Definitions, Terms and Abbreviations

AE	Application Entity
ANSI	American National Standard Institute
DICOM	Digital Imaging and Communications in Medicine
FSR	File Set Reader
FSC	File Set Creator
IOD	Information Object Definition
ISO	International Organization for Standardization
NEMA	National Electrical Manufacturers Association
SCP	Service Class Provider
SCU	Service Class User
SOP	Service-Object Pair
TCP/IP	Transmission Control Protocol/Internet Protocol
UID	Unique Identifier

XML eXtensible Markup Language

3.4. References

[DICOM] Digital Imaging and Communications in Medicine (DICOM), NEMA PS 3.1-3.18, 2007

4. Implementation Model

4.1. Storage SCP AE

4.1.1. Application Data Flow Diagram

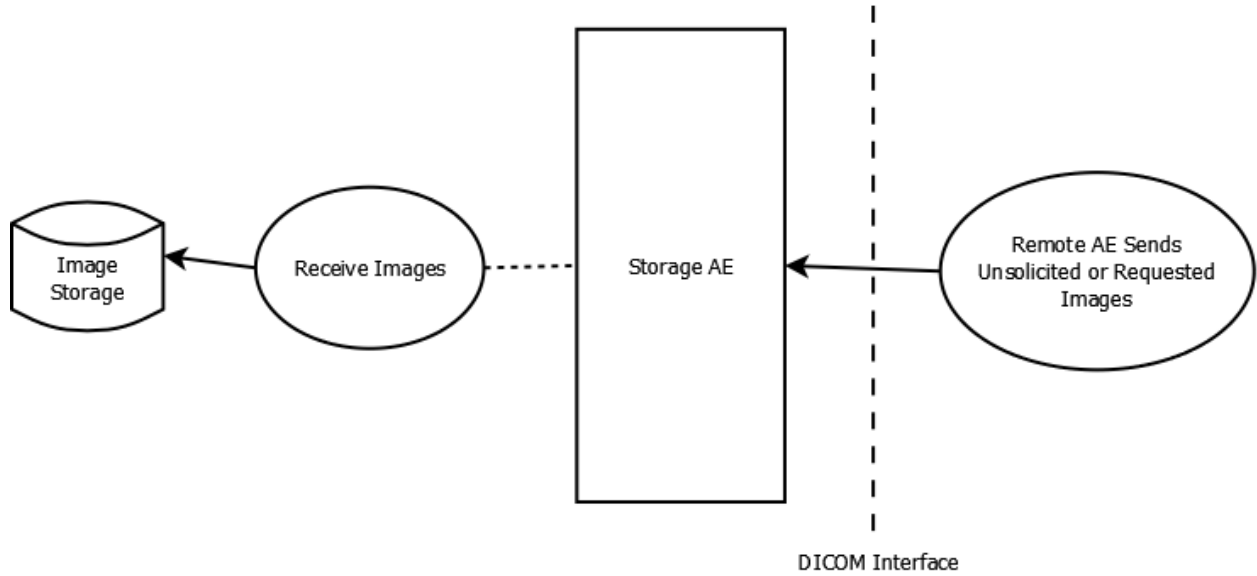


Figure 4.1—Storage SCP AE Dataflow

4.1.2. Functional Definition of AE

The Storage SCP AE accepts connections to the configured AE title's presentation address. Associations having presentation contexts with Storage SOP classes will be accepted.

4.1.2.1. Receive Images

The Receive Images operation is initiated by a successful association with a remote AE requesting to store images. Images received from the remote AE are sent to an image storage system(s). The system(s) to which received images are sent are determined by configuration for the destination AE title.

4.1.3. Sequencing of Real World Activities

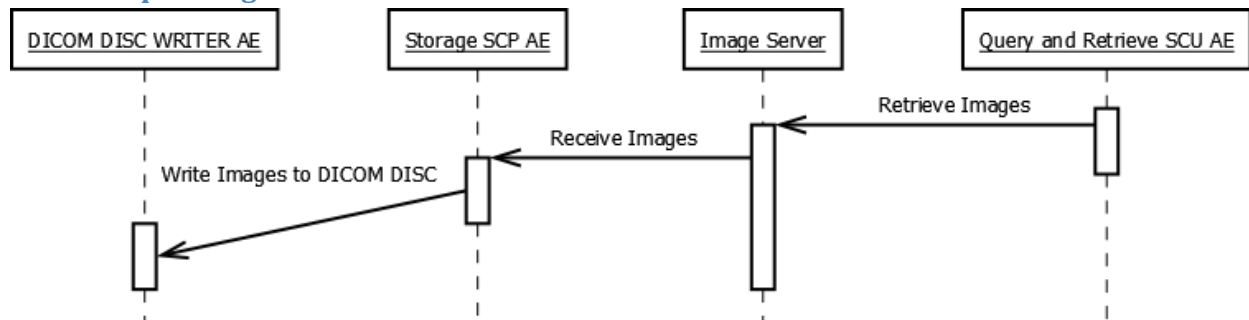


Figure 4.2—Example Real World Activity for Storage SCP AE

4.2. Storage SCU AE

4.2.1. Application Data Flow Diagram

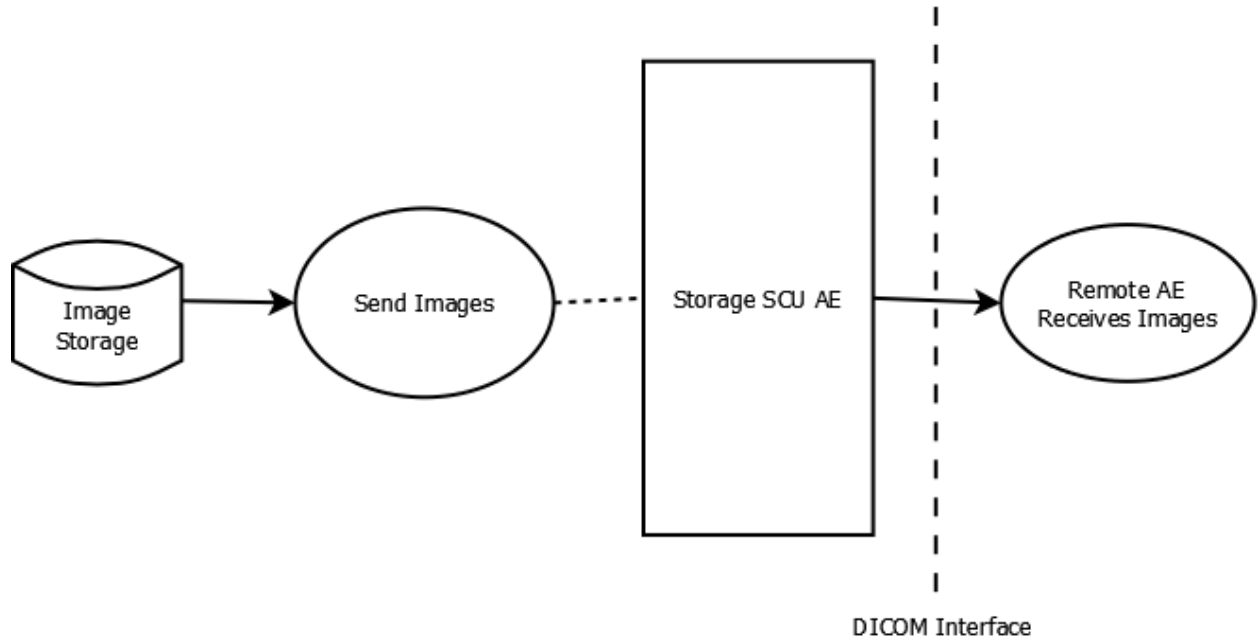


Figure 4.3—Storage SCU AE Dataflow

4.2.2. Functional Definition of AE

4.2.2.1. *Send Images*

The Send Images operation is initiated in response to Query and Retrieve or DICOM DISC media import operations. An association is initiated with the destination AE and is followed by a transfer of the requested images using C-Store operations.

4.2.3. Sequencing of Real World Activities

Not Applicable

4.3. DICOM DISC Writer AE

4.3.1. Application Data Flow Diagram

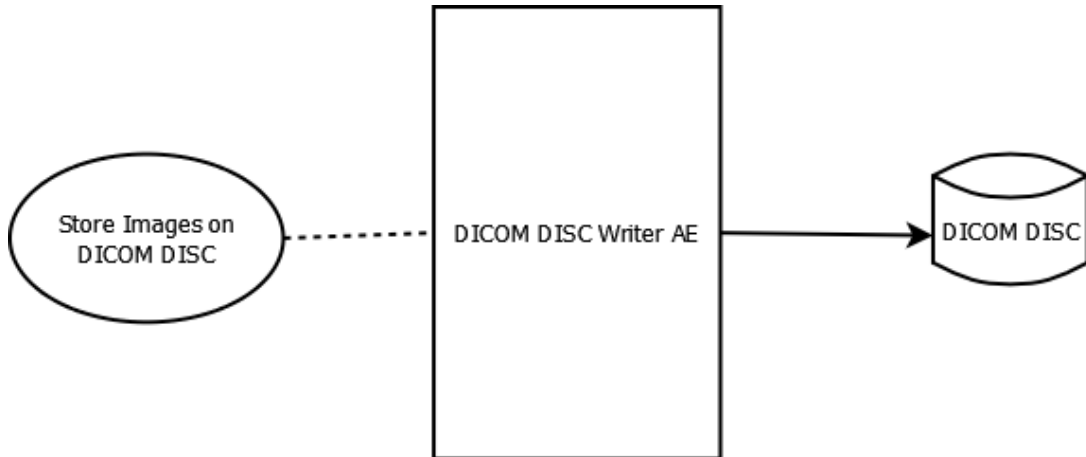


Figure 4.4—DICOM DISC Writer AE Dataflow

4.3.2. Functional Definition of AE

4.3.2.1. *Store Images on DICOM DISC*

The operation *Store Images on DICOM DISC* is initiated by the existence of a job production order in the build queue. Images bundled with the job will be conveyed to a DICOM DISC. Job production orders may include the following options:

- **Data Encryption**—writes images in Secure DICOM File Format.
- **Re-identification**—modifies patient demographic information.
- **DISC Write Verification**—verifies successful creation of DISC media.
- **Include Structured Reports**—retrieves associated structured reports from image source.

4.3.3. Sequencing of Real World Activities

Not applicable

4.4. Query and Retrieve SCU AE

4.4.1. Application Data Flow Diagram

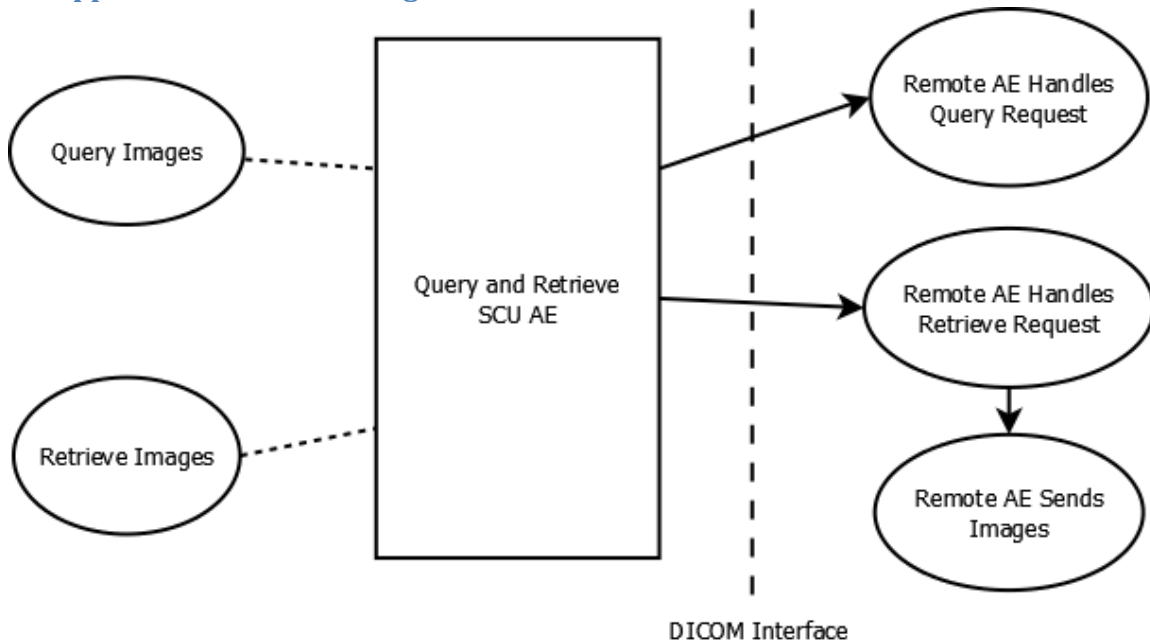


Figure 4.5—Query and Retrieve SCU AE Dataflow

4.4.2. Functional Definitions of AE

4.4.2.1. Query Images

Query Images establishes an association with a DICOM Query/Retrieve SCP using a presentation context having a Find SOP class. A Find request is sent with user specified query fields.

4.4.2.2. Retrieve Images

Retrieve Images establishes an association with a DICOM Query/Retrieve SCP using a presentation context having a Move SOP class. A Move request is sent for selected studies.

4.4.3. Sequencing of Real World Activities

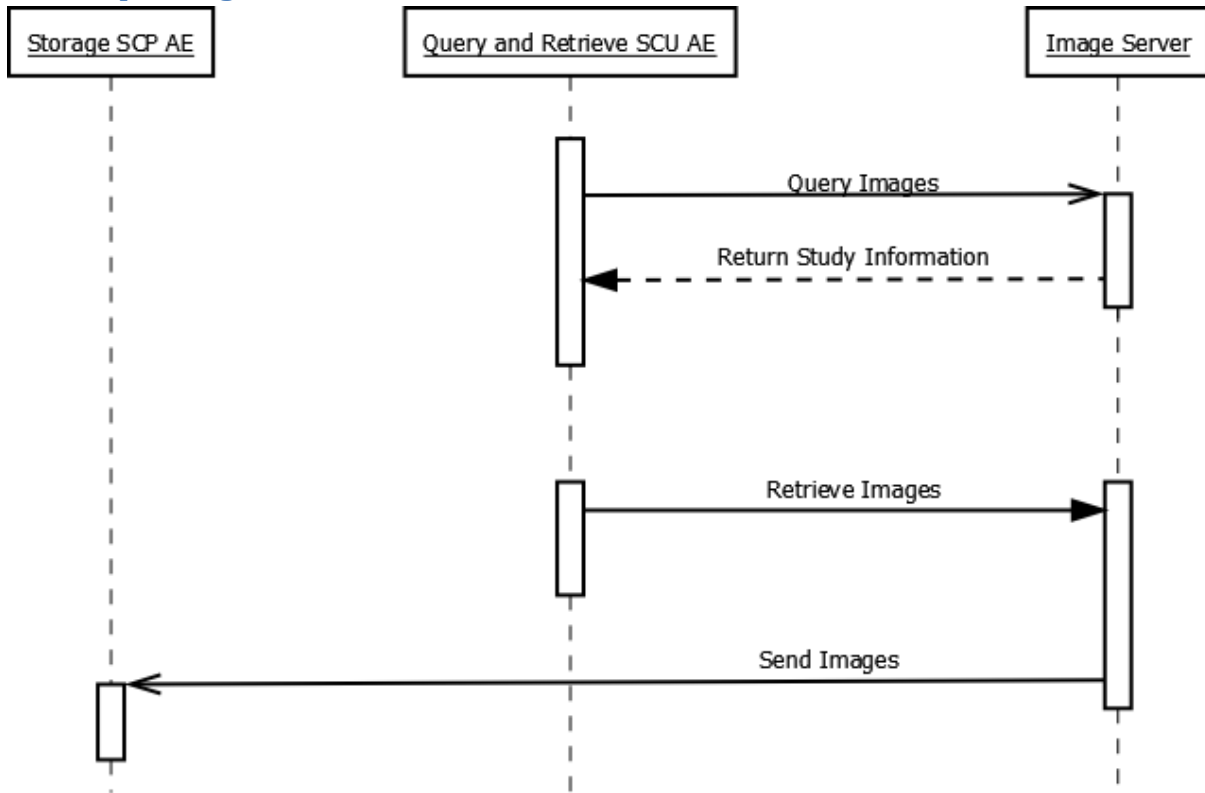


Figure 4.6—Example Real World Activity for Query and Retrieve SCU AE

4.5. Query and Retrieve SCP AE

4.5.1. Application Data Flow Diagram

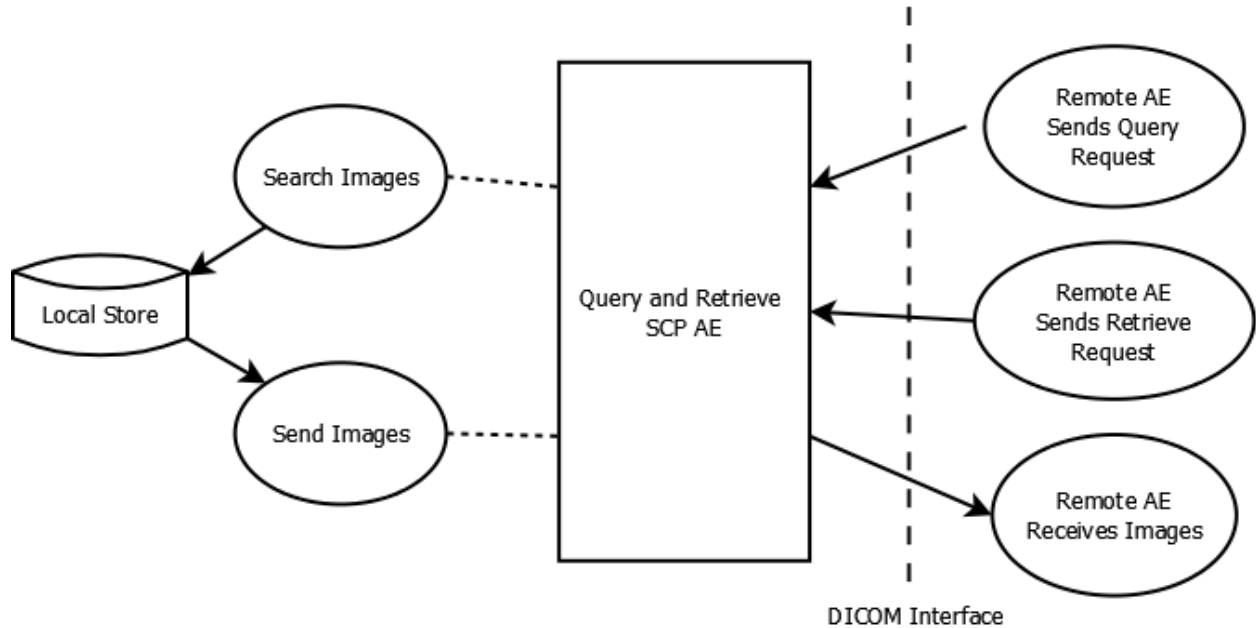


Figure 4.7—Query and Retrieve SCP AE Dataflow

4.5.2. Functional Definitions of AE

The Query and Retrieve SCP AE accepts connections to the configured AE title's presentation address. Associations having presentation contexts with Find or Move SOP classes will be accepted.

4.5.2.1. Search Images

Search Images is initiated by a Find request to the addressed local store. Search Images searches the host file system area assigned to the addressed local store for matches to user provided search criterion. Results are returned to the calling SCU.

4.5.2.2. Send Images

Send Objects is initiated by a Move request to the addressed local store. Send Images initiates Store requests through the Storage SCU AE for the image instances corresponding to the received Move request.

4.5.3. Sequencing of Real World Activities

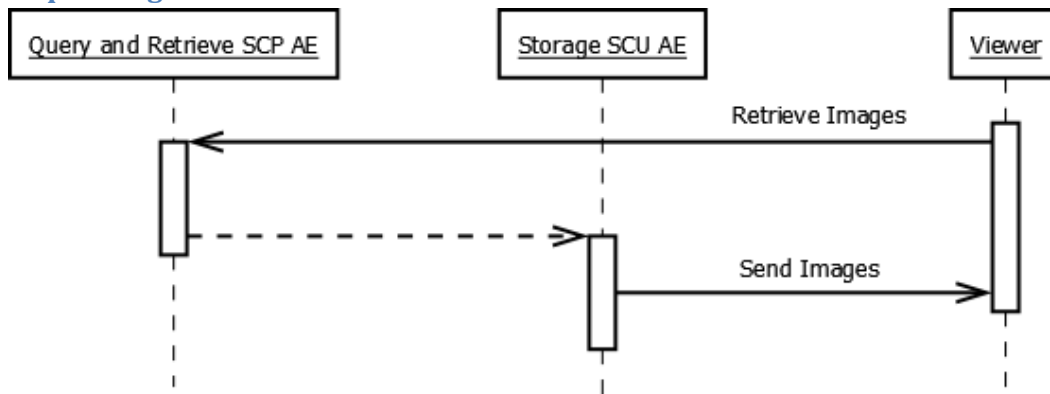


Figure 4.8—Example Real World Activity for Storage SCU AE

4.6. Importer AE

4.6.1. Application Data Flow Diagram

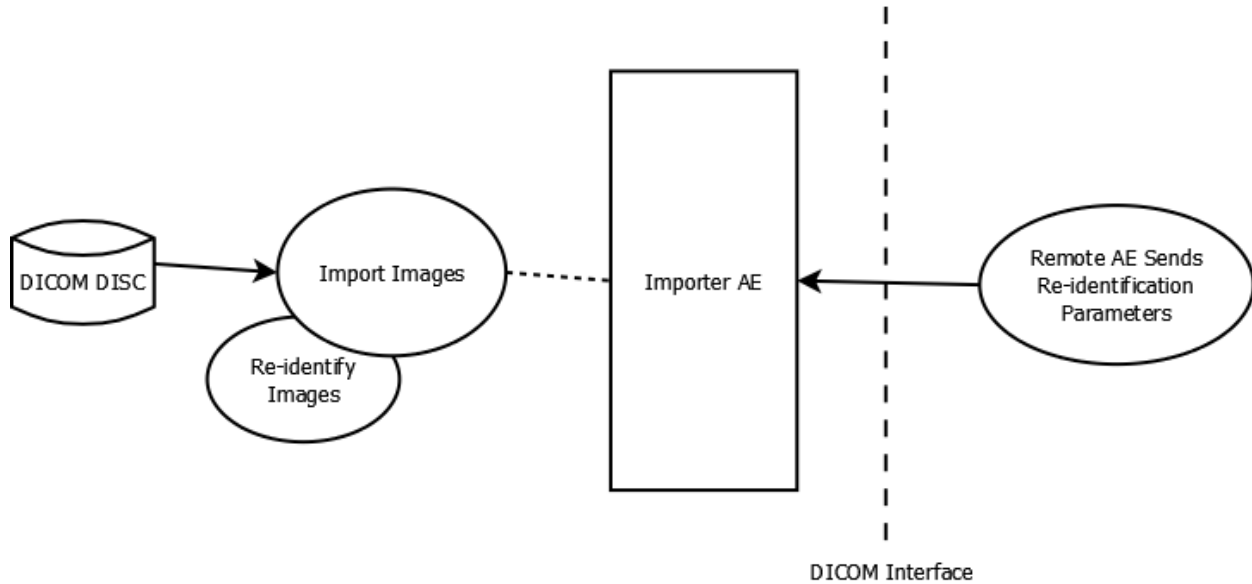


Figure 4.9—Importer AE Dataflow

4.6.2. Functional Definitions of AE

The Importer AE is a FSR enabling the importation of DICOM part 10 files from removable DICOM disc media.

4.6.2.1. Import Images

Import Images reads in a DICOM file set and sends Store requests to a user selected Storage. Import Images includes the ability to re-identify patient demographic using one of the following user selected source options:

- **Query and Retrieve SCP**
- **Modality Worklist Management SCP**
- **User-entered Values**

4.6.3. Sequencing of Real World Activities

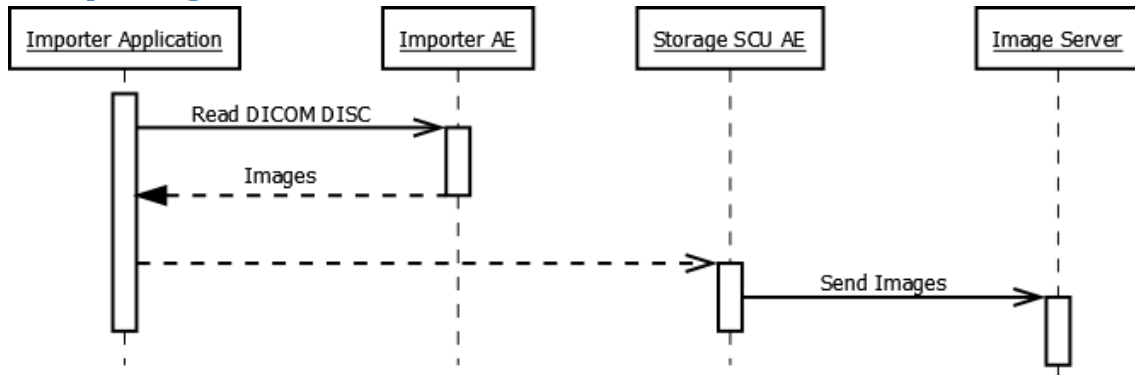


Figure 4.10—Example Real World Activity for Importer AE

4.7. Verification AE

4.7.1. Application Data Flow Diagram

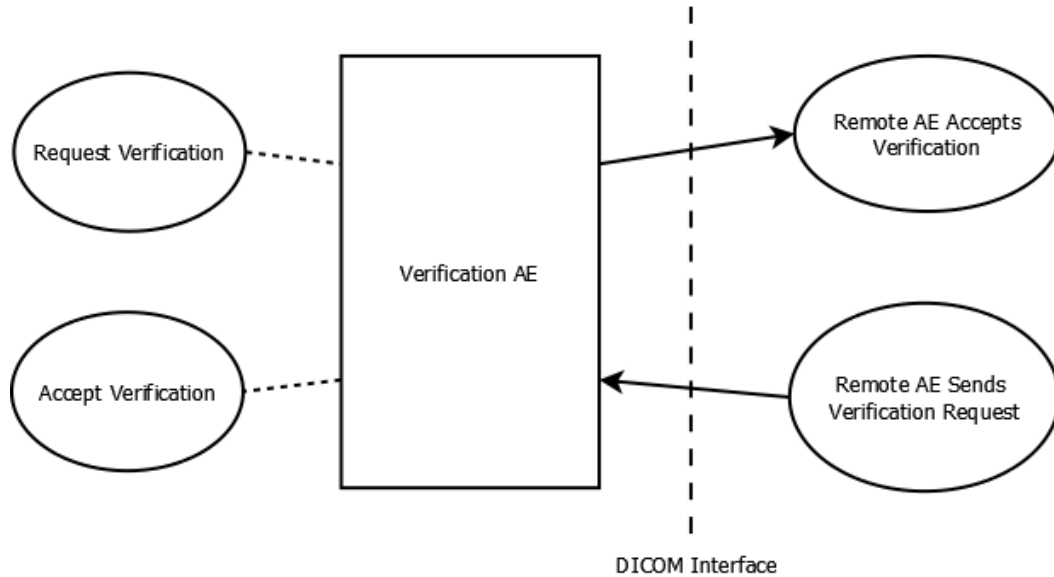


Figure 4.11—Verification AE Dataflow

4.7.2. Functional Definitions of AE

4.7.2.1. Request Verification

The Verification AE acts as an SCU by sending requests with a presentation context having a Verification SOP class.

4.7.2.2. Accept Verification

The Verification AE acts as an SCP by accepting connections for associations having presentation contexts for Verification SOP classes.

4.7.3. Sequencing of Real World Activities

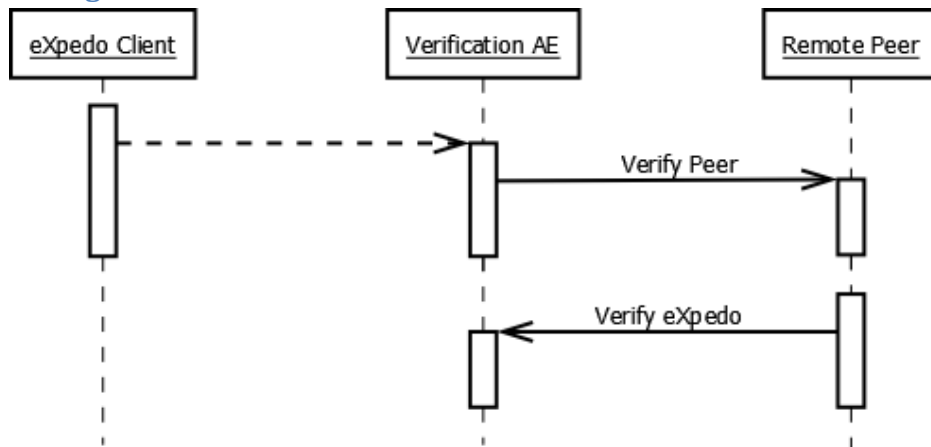


Figure 4.12—Example Real World Activity for Verification AE

5. AE Specifications

5.1. Storage SCP AE

5.1.1. SOP Classes

The Storage SCP AE provides Standard Conformance to the following SOP classes:

<i>SOP Class Name</i>	<i>SOP Class UID</i>	<i>SCU</i>	<i>SCP</i>
Stored Print Storage	1.2.840.10008.5.1.1.27	No	Yes
Hardcopy Grayscale Image Storage	1.2.840.10008.5.1.1.29	No	Yes
Hardcopy Color Image Storage	1.2.840.10008.5.1.1.30	No	Yes
Computed Radiography Image Storage	1.2.840.10008.5.1.4.1.1.1	No	Yes
Digital X-Ray Image Storage (Presentation)	1.2.840.10008.5.1.4.1.1.1.1	No	Yes
Digital X-Ray Image Storage (Processing)	1.2.840.10008.5.1.4.1.1.1.1.1	No	Yes
Digital Mammography Image Storage (Presentation)	1.2.840.10008.5.1.4.1.1.1.2	No	Yes
Digital Mammography Image Storage (Processing)	1.2.840.10008.5.1.4.1.1.1.2.1	No	Yes
Digital Intra-oral X-Ray Image Storage (Presentation)	1.2.840.10008.5.1.4.1.1.1.3	No	Yes
Digital Intra-oral X-Ray Image Storage (Processing)	1.2.840.10008.5.1.4.1.1.1.3.1	No	Yes
Ultrasound Multi-frame Image Storage	1.2.840.10008.5.1.4.1.1.3.1	No	Yes
MR Image Storage	1.2.840.10008.5.1.4.1.1.4	No	Yes
Enhanced MR Image Storage	1.2.840.10008.5.1.4.1.1.4.1	No	Yes
Ultrasound Image Storage	1.2.840.10008.5.1.4.1.1.6	No	Yes
Ultrasound Image Storage	1.2.840.10008.5.1.4.1.1.6.1	No	Yes
Secondary Capture Image Storage	1.2.840.10008.5.1.4.1.1.7	No	Yes
Multi-frame Single Bit Secondary Capture Image Storage	1.2.840.10008.5.1.4.1.1.7.1	No	Yes
Multi-frame Grayscale Byte Secondary Capture Image Storage	1.2.840.10008.5.1.4.1.1.7.2	No	Yes
Multi-frame Grayscale Word Secondary Capture Image Storage	1.2.840.10008.5.1.4.1.1.7.3	No	Yes
Multi-frame True Color Secondary Capture Image Storage	1.2.840.10008.5.1.4.1.1.7.4	No	Yes
Stand-alone Overlay Storage	1.2.840.10008.5.1.4.1.1.8	No	Yes
Stand-alone Curve Storage	1.2.840.10008.5.1.4.1.1.9	No	Yes
12-Lead ECG Waveform	1.2.840.10008.5.1.4.1.1.9.1.1	No	Yes
General ECG Waveform	1.2.840.10008.5.1.4.1.1.9.1.2	No	Yes
Ambulatory ECG Waveform	1.2.840.10008.5.1.4.1.1.9.1.3	No	Yes
Hemodynamic Waveform	1.2.840.10008.5.1.4.1.1.9.2.1	No	Yes
Cardiac Electrophysiology Waveform	1.2.840.10008.5.1.4.1.1.9.3.1	No	Yes

Basic Voice Audio Waveform	1.2.840.10008.5.1.4.1.1.9.4.1	No	Yes
Stand-alone Modality LUT Storage	1.2.840.10008.5.1.4.1.1.10	No	Yes
Stand-alone VOI LUT Storage	1.2.840.10008.5.1.4.1.1.11	No	Yes
Grayscale Softcopy Presentation State Storage	1.2.840.10008.5.1.4.1.1.11.1	No	Yes
X-Ray Angiographic Image Storage	1.2.840.10008.5.1.4.1.1.12.1	No	Yes
X-Ray Radiofluoroscopic Image Storage	1.2.840.10008.5.1.4.1.1.12.2	No	Yes
Nuclear Medicine Image Storage	1.2.840.10008.5.1.4.1.1.20	No	Yes
Key Image Object Storage SOP Class	1.2.840.10008.5.1.4.1.1.88.59	No	Yes
VL Endoscopic Image Storage	1.2.840.10008.5.1.4.1.1.77.1.1	No	Yes
Video Endoscopic Storage SOP Class	1.2.840.10008.5.1.4.1.1.77.1.1.1	No	Yes
VL Microscopic Image	1.2.840.10008.5.1.4.1.1.77.1.2	No	Yes
VL Slide	1.2.840.10008.5.1.4.1.1.77.1.3	No	Yes
VL Photographic Image Storage	1.2.840.10008.5.1.4.1.1.77.1.4	No	Yes
Ophthalmic Photography IOD 8 Bit Image Storage	1.2.840.10008.5.1.4.1.1.77.1.5.1	No	Yes
Ophthalmic Photography IOD 16 Bit Image Storage	1.2.840.10008.5.1.4.1.1.77.1.5.2	No	Yes
Stereometric Relationship Image Storage	1.2.840.10008.5.1.4.1.1.77.1.5.3	No	Yes
Basic Text SR	1.2.840.10008.5.1.4.1.1.88.11	No	Yes
Enhanced SR	1.2.840.10008.5.1.4.1.1.88.22	No	Yes
Comprehensive SR	1.2.840.10008.5.1.4.1.1.88.33	No	Yes
Key Image Object Storage SOP Class	1.2.840.10008.5.1.4.1.1.88.59	No	Yes
Encapsulated PDF Storage SOP Class	1.2.840.10008.5.1.4.1.1.104.1	No	Yes
Positron Emission Tomography Image Storage	1.2.840.10008.5.1.4.1.1.128	No	Yes
Standalone PET Curve Storage	1.2.840.10008.5.1.4.1.1.129	No	Yes
RT Image Storage	1.2.840.10008.5.1.4.1.1.481.1	No	Yes
RT Dose Storage	1.2.840.10008.5.1.4.1.1.481.2	No	Yes
RT Structure Set Storage	1.2.840.10008.5.1.4.1.1.481.3	No	Yes
RT Beams Treatment Record Storage	1.2.840.10008.5.1.4.1.1.481.4	No	Yes
RT Plan Storage	1.2.840.10008.5.1.4.1.1.481.5	No	Yes
RT Brachy Treatment Record Storage	1.2.840.10008.5.1.4.1.1.481.6	No	Yes
RT Treatment Summary Record Storage	1.2.840.10008.5.1.4.1.1.481.7	No	Yes

5.1.2. Association Establishment Policies

5.1.2.1. General

The DICOM standard Application context shall be specified.

<i>Application Context Name</i>	1.2.840.10008.3.1.1.1
---------------------------------	-----------------------

5.1.2.2. Number of Associations

The Storage SCP AE is internally limited by configuration in the number of simultaneous associations it may accept.

<i>Maximum Number of Simultaneous Associations (acceptor)</i>	100 (default)
---	---------------

5.1.2.3. Asynchronous Nature

Multiple outstanding operations over a single association are not supported.

<i>Maximum Number of Outstanding Asynchronous Transactions</i>	1
--	---

5.1.2.4. Implementation Identifying Information

<i>Implementation Class UID</i>	2.16.840.1.114444
<i>Implementation Version Name</i>	EXPEDOSVC{x} ¹

5.1.3. Association Initiation by Real World Activity

The Storage SCP AE never initiates an association.

5.1.4. Association Acceptance Policy

The Storage SCP AE accepts associations from remote AEs offering valid Presentation Contexts.

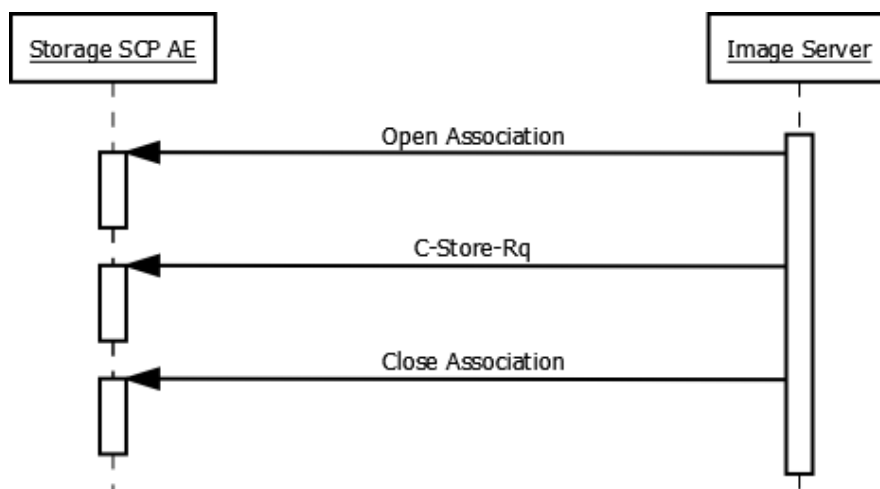


Figure 5.1—Receive Images Activity

5.1.4.1. Accepted Presentation Contexts

Note: transfer syntax support is consistent across Storage classes.

Abstract Syntax		Transfer Syntax		Role	Ext. Neg.
Name	UID	Name	UID		
See Table 5.1	See Table 5.1	Implicit VR Little Endian	1.2.840.10008.1.2	SCP	None
		Explicit VR Little Endian	1.2.840.10008.1.2.1	SCP	None
		Explicit VR Big Endian	1.2.840.10008.1.2.2	SCP	None
		JPEG Process 1 Baseline	1.2.840.10008.1.2.4.50	SCP	None
		JPEG Process Ext 24	1.2.840.10008.1.2.4.51	SCP	None
		JPEG Process 14	1.2.840.10008.1.2.4.57	SCP	None

¹ "{x}" representing the application version number. E.g. "2.7.0.6"

		Lossless			
		JPEG Process 14 Lossless SV1	1.2.840.10008.1.2.4.70	SCP	None
		JPEG Lossless	1.2.840.10008.1.2.4.80	SCP	None
		JPEG Near Lossless	1.2.840.10008.1.2.4.81	SCP	None
		JPEG 2000 Near Lossless	1.2.840.10008.1.2.4.90	SCP	None
		JPEG 2000	1.2.840.10008.1.2.4.91	SCP	None
		MPEG 2	1.2.840.10008.1.2.4.100	SCP	None

<i>Table 5.3 Storage SCP AE C-Store Status Return Reasons</i>			
<i>Service Status</i>	<i>Further Meaning</i>	<i>Error Code</i>	<i>Reason</i>
Refused	Out of resources	A700	Out of resources
Failed	Identifier Mismatch	A900	Identifier/SOP Class mismatch
	Not Supported	C001	Option is not supported on the eXpedo system
	Volume Not Found	C002	Unable to find specified local store
	Not Responding	C003	The server is not responding. Try again later
	Not Authorized	C004	The system could not log you on
	Presentation Context Missing	C006	Cannot understand
Cancel	Request Cancelled	FE00	Cancelled
Pending	Pending	FF00	Pending
Success	Success	0000	Success

5.2. Storage SCU AE

5.2.1. SOP Classes

The Storage SCU AE provides Standard Conformance to the following SOP classes:

<i>Table 5.4 Supported SOP Classes</i>			
<i>SOP Class Name</i>	<i>SOP Class UID</i>	<i>SCU</i>	<i>SCP</i>
Stored Print Storage	1.2.840.10008.5.1.1.27	Yes	No
Hardcopy Grayscale Image Storage	1.2.840.10008.5.1.1.29	Yes	No
Hardcopy Color Image Storage	1.2.840.10008.5.1.1.30	Yes	No
Computed Radiography Image Storage	1.2.840.10008.5.1.4.1.1.1	Yes	No
Digital X-Ray Image Storage (Presentation)	1.2.840.10008.5.1.4.1.1.1.1	Yes	No
Digital X-Ray Image Storage (Processing)	1.2.840.10008.5.1.4.1.1.1.1.1	Yes	No
Digital Mammography Image Storage (Presentation)	1.2.840.10008.5.1.4.1.1.1.2	Yes	No
Digital Mammography Image Storage (Processing)	1.2.840.10008.5.1.4.1.1.1.2.1	Yes	No
Digital Intra-oral X-Ray Image Storage (Presentation)	1.2.840.10008.5.1.4.1.1.1.3	Yes	No
Digital Intra-oral X-Ray Image Storage (Processing)	1.2.840.10008.5.1.4.1.1.1.3.1	Yes	No
CT Image Storage	1.2.840.10008.5.1.4.1.1.2	Yes	No
Ultrasound Multi-frame Image Storage	1.2.840.10008.5.1.4.1.1.3.1	Yes	No
MR Image Storage	1.2.840.10008.5.1.4.1.1.4	Yes	No
Enhanced MR Image Storage	1.2.840.10008.5.1.4.1.1.4.1	Yes	No
Ultrasound Image Storage	1.2.840.10008.5.1.4.1.1.6	Yes	No
Ultrasound Image Storage	1.2.840.10008.5.1.4.1.1.6.1	Yes	No
Secondary Capture Image Storage	1.2.840.10008.5.1.4.1.1.7	Yes	No
Multi-frame Single Bit Secondary Capture Image Storage	1.2.840.10008.5.1.4.1.1.7.1	Yes	No
Multi-frame Grayscale Byte Secondary Capture Image Storage	1.2.840.10008.5.1.4.1.1.7.2	Yes	No
Multi-frame Grayscale Word Secondary Capture Image Storage	1.2.840.10008.5.1.4.1.1.7.3	Yes	No
Multi-frame True Color Secondary Capture Image Storage	1.2.840.10008.5.1.4.1.1.7.4	Yes	No
Stand-alone Overlay Storage	1.2.840.10008.5.1.4.1.1.8	Yes	No
Stand-alone Curve Storage	1.2.840.10008.5.1.4.1.1.9	Yes	No
12-Lead ECG Waveform	1.2.840.10008.5.1.4.1.1.9.1.1	Yes	No
General ECG Waveform	1.2.840.10008.5.1.4.1.1.9.1.2	Yes	No
Ambulatory ECG Waveform	1.2.840.10008.5.1.4.1.1.9.1.3	Yes	No
Hemodynamic Waveform	1.2.840.10008.5.1.4.1.1.9.2.1	Yes	No
Cardiac Electrophysiology Waveform	1.2.840.10008.5.1.4.1.1.9.3.1	Yes	No
Basic Voice Audio Waveform	1.2.840.10008.5.1.4.1.1.9.4.1	Yes	No
Stand-alone Modality LUT Storage	1.2.840.10008.5.1.4.1.1.10	Yes	No

Stand-alone VOI LUT Storage	1.2.840.10008.5.1.4.1.1.11	Yes	No
Grayscale Softcopy Presentation State Storage	1.2.840.10008.5.1.4.1.1.11.1	Yes	No
X-Ray Angiographic Image Storage	1.2.840.10008.5.1.4.1.1.12.1	Yes	No
X-Ray Radiofluoroscopic Image Storage	1.2.840.10008.5.1.4.1.1.12.2	Yes	No
Nuclear Medicine Image Storage	1.2.840.10008.5.1.4.1.1.20	Yes	No
Key Image Object Storage SOP Class	1.2.840.10008.5.1.4.1.1.88.59	Yes	No
VL Endoscopic Image Storage	1.2.840.10008.5.1.4.1.1.77.1.1	Yes	No
Video Endoscopic Storage SOP Class	1.2.840.10008.5.1.4.1.1.77.1.1.1	Yes	No
VL Microscopic Image	1.2.840.10008.5.1.4.1.1.77.1.2	Yes	No
VL Slide	1.2.840.10008.5.1.4.1.1.77.1.3	Yes	No
VL Photographic Image Storage	1.2.840.10008.5.1.4.1.1.77.1.4	Yes	No
Ophthalmic Photography IOD 8 Bit Image Storage	1.2.840.10008.5.1.4.1.1.77.1.5.1	Yes	No
Ophthalmic Photography IOD 16 Bit Image Storage	1.2.840.10008.5.1.4.1.1.77.1.5.2	Yes	No
Stereometric Relationship Image Storage	1.2.840.10008.5.1.4.1.1.77.1.5.3	Yes	No
Basic Text SR	1.2.840.10008.5.1.4.1.1.88.11	Yes	No
Enhanced SR	1.2.840.10008.5.1.4.1.1.88.22	Yes	No
Comprehensive SR	1.2.840.10008.5.1.4.1.1.88.33	Yes	No
Key Image Object Storage SOP Class	1.2.840.10008.5.1.4.1.1.88.59	Yes	No
Encapsulated PDF Storage SOP Class	1.2.840.10008.5.1.4.1.1.104.1	Yes	No
Positron Emission Tomography Image Storage	1.2.840.10008.5.1.4.1.1.128	Yes	No
Standalone PET Curve Storage	1.2.840.10008.5.1.4.1.1.129	Yes	No
RT Image Storage	1.2.840.10008.5.1.4.1.1.481.1	Yes	No
RT Dose Storage	1.2.840.10008.5.1.4.1.1.481.2	Yes	No
RT Structure Set Storage	1.2.840.10008.5.1.4.1.1.481.3	Yes	No
RT Beams Treatment Record Storage	1.2.840.10008.5.1.4.1.1.481.4	Yes	No
RT Plan Storage	1.2.840.10008.5.1.4.1.1.481.5	Yes	No
RT Brachy Treatment Record Storage	1.2.840.10008.5.1.4.1.1.481.6	Yes	No
RT Treatment Summary Record Storage	1.2.840.10008.5.1.4.1.1.481.7	Yes	No

5.2.2. Association Establishment Policies

5.2.2.1. General

The DICOM standard Application context shall be specified.

<i>Application Context Name</i>	1.2.840.10008.3.1.1.1
---------------------------------	-----------------------

5.2.2.2. Number of Associations

The Storage SCU AE is not internally limited in the number of simultaneous associations it may initiate.

<i>Maximum Number of Simultaneous Associations (initiator)</i>	No Limit
--	----------

5.2.2.3. Asynchronous Nature

Multiple outstanding operations over a single association are not supported.

<i>Maximum Number of Outstanding Asynchronous Transactions</i>	1
--	---

5.2.2.4. Implementation Identifying Information

<i>Implementation Class UID</i>	2.16.840.1.114444
<i>Implementation Version Name</i>	EXPEDOSVC{x} ²

5.2.3. Association Initiation by Real World Activity

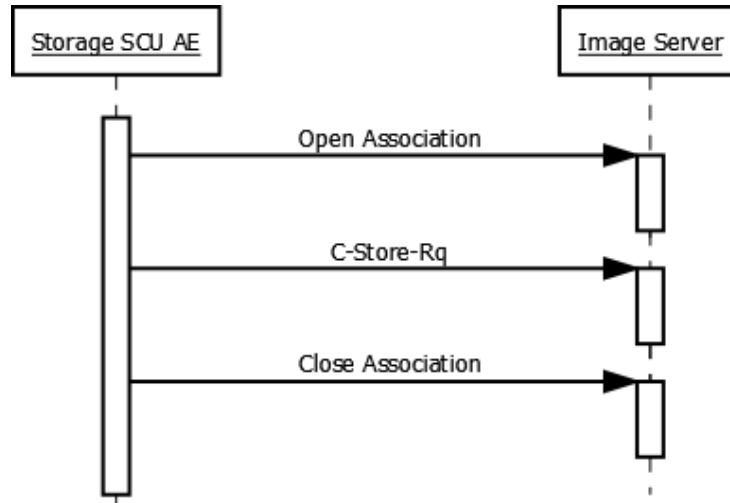


Figure 5.2—Send Images Activity

Abstract Syntax		Transfer Syntax		Role	Ext. Neg.
Name	UID	Name	UID		
See Table 5.4	See Table 5.4	Implicit VR Little Endian	1.2.840.10008.1.2	SCU	None
		Explicit VR Little Endian	1.2.840.10008.1.2.1	SCU	None
		Explicit VR Big Endian	1.2.840.10008.1.2.2	SCU	None
		JPEG Process 1 Baseline	1.2.840.10008.1.2.4.50	SCU	None
		JPEG Process Ext 24	1.2.840.10008.1.2.4.51	SCU	None
		JPEG Process 14 Lossless	1.2.840.10008.1.2.4.57	SCU	None
		JPEG Process 14 Lossless SV1	1.2.840.10008.1.2.4.70	SCU	None
		JPEG Lossless	1.2.840.10008.1.2.4.80	SCU	None
		JPEG Near Lossless	1.2.840.10008.1.2.4.81	SCU	None
		JPEG 2000 Near Lossless	1.2.840.10008.1.2.4.90	SCU	None
		JPEG 2000	1.2.840.10008.1.2.4.91	SCU	None
		MPEG 2	1.2.840.10008.1.2.4.100	SCU	None

² "{x}" representing the application version number. E.g. "2.7.0.6"

5.2.4. Association Acceptance Policy

The Storage SCU AE never accepts an association.

5.3. DICOM DISC Writer AE

5.3.1.1. Conformance to DICOM Interchange of the Media Storage Service

DICOM DISC Writer AE supports DICOM Interchange of the Media Storage Service. It provides standard conformance as a FSC as defined in part 10 of the DICOM standard.

NOTE: The DICOM DISC Writer AE is agnostic with respect to transfer syntax as an FSC for Image Storage classes. Image instances included in a build job production order receive no conversion/post-processing. Standard conformant application profiles are only possible if images to be written already match profile transfer syntax options.

<i>Application Profiles Supported</i>	<i>Real-World Activity</i>	<i>Roles</i>	<i>SC Option</i>
STD-GEN-CD	Store Images on DICOM DISC	FSC	Interchange
STD-GEN-SEC-CD	Store Images on DICOM DISC	FSC	Interchange
STD-GEN-DVD	Store Images on DICOM DISC	FSC	Interchange
STD-GEN-SEC-DVD	Store Images on DICOM DISC	FSC	Interchange

5.3.2. File Meta Information

<i>Implementation Class UID</i>	2.16.840.1.114444
<i>Implementation Version Name</i>	EXPEDOSVC{x} ³

5.3.3. Real World Activity—Store Images on DICOM DISC

The DICOM DISC Writer AE acts as an FSC to export SOP instances associated with DICOM DISC build jobs.

The user is able to provide DISC production options that include the re-identification of patient demographics, encryption of DICOM files⁴ as well as DISC verification.

5.3.3.1. Options

DICOM DISC Writer AE supports the SOP classes and Transfer Syntaxes listed in the table below.

<i>IOD</i>	<i>SOP Class UID</i>	<i>Transfer Syntax</i>	<i>Transfer Syntax UID</i>
Basic Directory	1.2.840.10008.1.3.10	Explicit VR Little Endian Uncompressed	1.2.840.10008.1.2.1
Stored Print Storage	1.2.840.10008.5.1.1.27	Refer to Conformance Note.	Refer to Conformance Note.
Hardcopy Grayscale Image Storage	1.2.840.10008.5.1.1.29		

³ "{x}" representing the application version number. E.g. "2.7.0.6"

⁴ Refer to the Security section of this document for DICOM conformance specifics.

Hardcopy Color Image Storage	1.2.840.10008.5.1.1.1.30		
Computed Radiography Image Storage	1.2.840.10008.5.1.4.1.1.1		
Digital X-Ray Image Storage (Presentation)	1.2.840.10008.5.1.4.1.1.1.1		
Digital X-Ray Image Storage (Processing)	1.2.840.10008.5.1.4.1.1.1.1.1		
Digital Mammography Image Storage (Presentation)	1.2.840.10008.5.1.4.1.1.1.2		
Digital Mammography Image Storage (Processing)	1.2.840.10008.5.1.4.1.1.1.2.1		
Digital Intra-oral X-Ray Image Storage (Presentation)	1.2.840.10008.5.1.4.1.1.1.3		
Digital Intra-oral X-Ray Image Storage (Processing)	1.2.840.10008.5.1.4.1.1.1.3.1		
CT Image Storage	1.2.840.10008.5.1.4.1.1.2		
Ultrasound Multi-frame Image Storage	1.2.840.10008.5.1.4.1.1.3.1		
MR Image Storage	1.2.840.10008.5.1.4.1.1.4		
Enhanced MR Image Storage	1.2.840.10008.5.1.4.1.1.4.1		
Ultrasound Image Storage	1.2.840.10008.5.1.4.1.1.6		
Ultrasound Image Storage	1.2.840.10008.5.1.4.1.1.6.1		
Secondary Capture Image Storage	1.2.840.10008.5.1.4.1.1.7		
Multi-frame Single Bit Secondary Capture Image Storage	1.2.840.10008.5.1.4.1.1.7.1		
Multi-frame Grayscale Byte Secondary Capture Image Storage	1.2.840.10008.5.1.4.1.1.7.2		
Multi-frame Grayscale Word Secondary Capture Image Storage	1.2.840.10008.5.1.4.1.1.7.3		

Multi-frame True Color Secondary Capture Image Storage	1.2.840.10008.5.1.4.1.1.7.4		
Stand-alone Overlay Storage	1.2.840.10008.5.1.4.1.1.8		
Stand-alone Curve Storage	1.2.840.10008.5.1.4.1.1.9		
12-Lead ECG Waveform	1.2.840.10008.5.1.4.1.1.9.1.1		
General ECG Waveform	1.2.840.10008.5.1.4.1.1.9.1.2		
Ambulatory ECG Waveform	1.2.840.10008.5.1.4.1.1.9.1.3		
Hemodynamic Waveform	1.2.840.10008.5.1.4.1.1.9.2.1		
Cardiac Electrophysiology Waveform	1.2.840.10008.5.1.4.1.1.9.3.1		
Basic Voice Audio Waveform	1.2.840.10008.5.1.4.1.1.9.4.1		
Stand-alone Modality LUT Storage	1.2.840.10008.5.1.4.1.1.10		
Stand-alone VOI LUT Storage	1.2.840.10008.5.1.4.1.1.11		
Grayscale Softcopy Presentation State Storage	1.2.840.10008.5.1.4.1.1.11.1		
X-Ray Angiographic Image Storage	1.2.840.10008.5.1.4.1.1.12.1		
X-Ray Radiofluoroscopic Image Storage	1.2.840.10008.5.1.4.1.1.12.2		
Nuclear Medicine Image Storage	1.2.840.10008.5.1.4.1.1.20		
Key Image Object Storage SOP Class	1.2.840.10008.5.1.4.1.1.88.59		
VL Endoscopic Image Storage	1.2.840.10008.5.1.4.1.1.77.1.1		
Video Endoscopic Storage SOP Class	1.2.840.10008.5.1.4.1.1.77.1.1.1		
VL Microscopic Image	1.2.840.10008.5.1.4.1.1.77.1.2		
VL Slide	1.2.840.10008.5.1.4.1.1.77.1.3		
VL Photographic Image Storage	1.2.840.10008.5.1.4.1.1.77.1.4		
Ophthalmic Photography IOD 8	1.2.840.10008.5.1.4.1.1.77.1.5.1		

Bit Image Storage			
Ophthalmic Photography IOD 16 Bit Image Storage	1.2.840.10008.5.1.4.1.1.77.1.5.2		
Stereometric Relationship Image Storage	1.2.840.10008.5.1.4.1.1.77.1.5.3		
Basic Text SR	1.2.840.10008.5.1.4.1.1.88.11		
Enhanced SR	1.2.840.10008.5.1.4.1.1.88.22		
Comprehensive SR	1.2.840.10008.5.1.4.1.1.88.33		
Key Image Object Storage SOP Class	1.2.840.10008.5.1.4.1.1.88.59		
Encapsulated PDF Storage SOP Class	1.2.840.10008.5.1.4.1.1.104.1		
Positron Emission Tomography Image Storage	1.2.840.10008.5.1.4.1.1.128		
Standalone PET Curve Storage	1.2.840.10008.5.1.4.1.1.129		
RT Image Storage	1.2.840.10008.5.1.4.1.1.481.1		
RT Dose Storage	1.2.840.10008.5.1.4.1.1.481.2		
RT Structure Set Storage	1.2.840.10008.5.1.4.1.1.481.3		
RT Beams Treatment Record Storage	1.2.840.10008.5.1.4.1.1.481.4		
RT Plan Storage	1.2.840.10008.5.1.4.1.1.481.5		
RT Brachy Treatment Record Storage	1.2.840.10008.5.1.4.1.1.481.6		
RT Treatment Summary Record Storage	1.2.840.10008.5.1.4.1.1.481.7		

5.4. Query and Retrieve SCU AE

5.4.1. SOP Classes

The Query and Retrieve SCU AE provides Standard Conformance to the following SOP classes:

Table 5.8 <i>Supported SOP Classes</i>			
<i>SOP Class Name</i>	<i>SOP Class UID</i>	<i>SCU</i>	<i>SCP</i>
Study Root Query/Retrieve Information Model—Find	1.2.840.10008.5.1.4.1.2.2.1	Yes	No
Study Root Query/Retrieve Information Model—Move	1.2.840.10008.5.1.4.1.2.2.2	Yes	No

5.4.2. Association Establishment Policies

5.4.2.1. General

The DICOM standard Application context shall be specified.

<i>Application Context Name</i>	1.2.840.10008.3.1.1.1
---------------------------------	-----------------------

5.4.2.2. Number of Associations

The Query and Retrieve SCU AE is not internally limited in the number of simultaneous associations it may initiate.

<i>Maximum Number of Simultaneous Associations (initiator)</i>	No Limit
--	----------

5.4.2.3. Asynchronous Nature

Multiple outstanding operations over a single association are not supported.

<i>Maximum Number of Outstanding Asynchronous Transactions</i>	1
--	---

5.4.2.4. Implementation Identifying Information

<i>Implementation Class UID</i>	2.16.840.1.114444
<i>Implementation Version Name</i>	EXPEDOSVC{x} ⁵

⁵ "{x}" representing the application version number. E.g. "2.7.0.6"

5.4.3. Association Initiation by Real World Activity

5.4.3.1. Real World Activity—Query Images

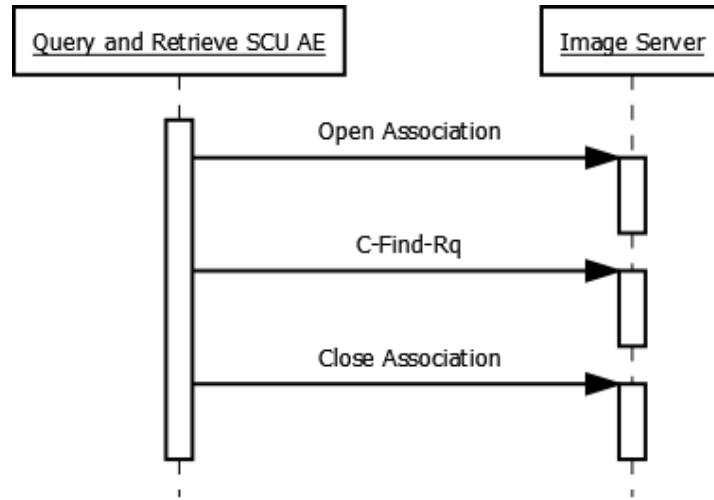


Figure 5.3—Query Images Activity

Abstract Syntax		Transfer Syntax		Role	Ext. Neg.
Name	UID	Name	UID		
Study Root Query/Retrieve Information Model—Find	1.840.10008.5.1.4.1.2.2.1	Implicit VR Little Endian	1.2.840.10008.1.2	SCU	None

5.4.3.2. SOP Specific Conformance to C-Find SOP Class

Query and Retrieve AE SCU provides standard conformance to the C-Find SOP class. Only a single information model, Study Root is supported.

<i>Name</i>	<i>Tag</i>
Study Level	
Patient's ID	(0010,0020)
Patient's Name	(0010,0010)
Patient's Sex	(0010,0040)
Study ID	(0020,0010)
Study Date	(0008,0020)
Study Accession No.	(0008,0050)
Study Description	(0008,1030)

5.4.3.3. Real World Activity—Retrieve Images

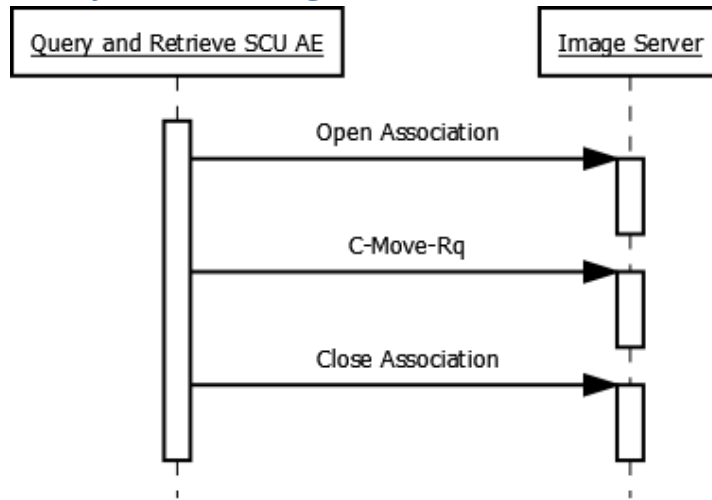


Figure 5.4—Retrieve Images Activity

Table 5.11 <i>Proposed Presentation Contexts</i>					
Abstract Syntax		Transfer Syntax		Role	Ext. Neg.
Name	UID	Name	UID		
Study Root Query/Retrieve Information Model—Move	1.840.10008.5.1.4.1.2.2.2	Implicit VR Little Endian	1.2.840.10008.1.2	SCU	None

5.4.4. Sop Specific Conformance to C-Move SOP Class

Query and Retrieve AE SCU provides standard conformance to the C-Move SOP class.

5.4.5. Association Acceptance Policy

The Query and Retrieve SCU AE does not accept associations.

5.5. Query and Retrieve SCP AE

5.5.1. SOP Classes

The Query and Retrieve SCP AE provides Standard Conformance to the following SOP classes:

<i>SOP Class Name</i>	<i>SOP Class UID</i>	<i>SCU</i>	<i>SCP</i>
Study Root Query/Retrieve Information Model—Find	1.2.840.10008.5.1.4.1.2.2.1	No	Yes
Study Root Query/Retrieve Information Model—Move	1.2.840.10008.5.1.4.1.2.2.2	No	Yes

5.5.2. Association Establishment Policies

5.5.2.1. General

The DICOM standard Application context shall be specified.

<i>Application Context Name</i>	1.2.840.10008.3.1.1.1
---------------------------------	-----------------------

5.5.2.2. Number of Associations

The Query and Retrieve SCP AE is internally limited by configuration in the number of simultaneous associations it may accept.

<i>Maximum Number of Simultaneous Associations (acceptor)</i>	100 (default)
---	---------------

5.5.2.3. Asynchronous Nature

Multiple outstanding operations over a single association are not supported.

<i>Maximum Number of Outstanding Asynchronous Transactions</i>	1
--	---

5.5.2.4. Implementation Identifying Information

<i>Implementation Class UID</i>	2.16.840.1.114444
<i>Implementation Version Name</i>	EXPEDOSVC{x} ⁶

5.5.3. Association Initiation by Real World Activity

The Query and Retrieve SCP AE never initiates an association.

5.5.4. Association Acceptance for Real World Activity

The Query and Retrieve SCP AE accepts associations from remote AEs offering valid Presentation Contexts.

⁶ "{x}" representing the application version number. E.g. "2.7.0.6"

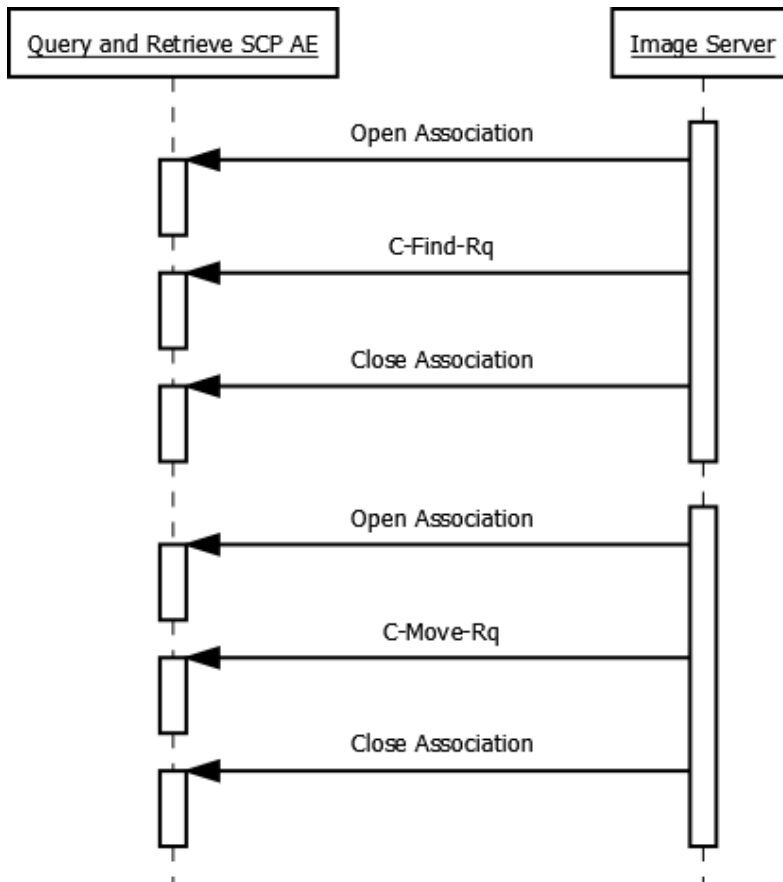


Figure 5.5—Search Images and Send Images

5.5.4.1. Accepted Presentation Contexts

Table 5.13 <i>Accepted Presentation Contexts</i>					
Abstract Syntax		Transfer Syntax		Role	Ext. Neg.
Name	UID	Name	UID		
See Table 5.12	See Table 5.12	Implicit VR Little Endian	1.2.840.10008.1.2	SCP	None
		Explicit VR Little Endian	1.2.840.10008.1.2.1	SCP	None
		Explicit VR Big Endian	1.2.840.10008.1.2.2	SCP	None
		JPEG Process 1 Baseline	1.2.840.10008.1.2.4.50	SCP	None
		JPEG Process Ext 24	1.2.840.10008.1.2.4.51	SCP	None
		JPEG Process 14 Lossless	1.2.840.10008.1.2.4.57	SCP	None
		JPEG Process 14 Lossless SV1	1.2.840.10008.1.2.4.70	SCP	None
		JPEG Lossless	1.2.840.10008.1.2.4.80	SCP	None
		JPEG Near Lossless	1.2.840.10008.1.2.4.81	SCP	None
		JPEG 2000 Near Lossless	1.2.840.10008.1.2.4.90	SCP	None
		JPEG 2000	1.2.840.10008.1.2.4.91	SCP	None
		MPEG 2	1.2.840.10008.1.2.4.100	SCP	None

Table 5.14 <i>Study Root Request Identifier for Query and Retrieve SCP AE</i>		
<i>Name</i>	<i>Tag</i>	<i>Types of Matching</i>
Study Level		
Patient's ID	(0010,0020)	S, U, W
Patient's Name	(0010,0010)	S, U, W
Patient's DOB	(0010,0030)	S, U
Patient's Sex	(0010,0040)	S, U
Study UID	(0020,000D)	S, U
Study ID	(0020,0010)	S, U
Study Date	(0008,0020)	R, U
Study Accession No.	(0008,0050)	S, U, W
Study Description	(0008,1030)	S, U, W

Legend: R= Range; S = Single Value; U = Universal; W = Wild Card

NOTE: Wild card matching does not support the "OR" (^) operator.

Table 5.15 <i>Query and Retrieve SCP AE Status Return Reasons</i>			
<i>Service Status</i>	<i>Further Meaning</i>	<i>Error Code</i>	<i>Reason</i>
Refused	Out of resources	A700	Out of resources
	Move Host Unknown	A801	Unknown move destination
Failed	Identifier Mismatch	A900	Identifier/SOP Class mismatch
	Not Supported	C001	Option is not supported on the eXpedo system
	Volume Not Found	C002	Unable to find specified local store
	Not Responding	C003	The server is not responding. Try again later
	Not Authorized	C004	The system could not log you on
	Data File Missing	C005	File Not Found
	Presentation Context Missing	C006	Cannot understand
Cancel	Request Cancelled	FE00	Cancelled
Pending	Pending	FF00	Pending
Success	Success	0000	Success

5.6. Importer AE

5.6.1.1. Conformance to DICOM Interchange of the Media Storage Service

Importer AE supports DICOM Interchange of the Media Storage Service. It provides standard conformance as a FSR as defined part 10 of the DICOM standard.

NOTE: The Importer AE is agnostic with respect to transfer syntax as an FSR for Image Storage classes. Conversion/post-processing of images is delegated to the Storage SCU AE.

Table 5.16 <i>Supported Application Profiles</i>			
<i>Application Profiles Supported</i>	<i>Real-World Activity</i>	<i>Roles</i>	<i>SC Option</i>
STD-GEN-CD	Store Images on DICOM DISC	FSR	Interchange

5.6.2. Initiation by Real World Activity—Import Images

The Importer AE acts as an FSR to import DICOM image instance files into the user specified remote AE.

5.6.2.1. Options

Importer AE supports the SOP classes and Transfer Syntaxes listed in the table below.

Table 5.17 <i>Supported IODs, SOP Classes and Transfer Syntaxes</i>			
<i>IOD</i>	<i>SOP Class UID</i>	<i>Transfer Syntax</i>	<i>Transfer Syntax UID</i>
Basic Directory	1.2.840.10008.1.3.10	Explicit VR Little Endian Uncompressed	1.2.840.10008.1.2.1
Stored Print Storage	1.2.840.10008.5.1.1.27	Refer to Conformance Note.	Refer to Conformance Note.
Hardcopy Grayscale Image Storage	1.2.840.10008.5.1.1.29		
Hardcopy Color Image Storage	1.2.840.10008.5.1.1.30		
Computed Radiography Image Storage	1.2.840.10008.5.1.4.1.1.1		
Digital X-Ray Image Storage (Presentation)	1.2.840.10008.5.1.4.1.1.1.1		
Digital X-Ray Image Storage (Processing)	1.2.840.10008.5.1.4.1.1.1.1.1		
Digital Mammography Image Storage (Presentation)	1.2.840.10008.5.1.4.1.1.1.2		
Digital Mammography Image Storage	1.2.840.10008.5.1.4.1.1.1.2.1		

(Processing)			
Digital Intra-oral X-Ray Image Storage (Presentation)	1.2.840.10008.5.1.4.1.1.1.3		
Digital Intra-oral X-Ray Image Storage (Processing)	1.2.840.10008.5.1.4.1.1.1.3.1		
CT Image Storage	1.2.840.10008.5.1.4.1.1.2		
Ultrasound Multi-frame Image Storage	1.2.840.10008.5.1.4.1.1.3.1		
MR Image Storage	1.2.840.10008.5.1.4.1.1.4		
Enhanced MR Image Storage	1.2.840.10008.5.1.4.1.1.4.1		
Ultrasound Image Storage	1.2.840.10008.5.1.4.1.1.6		
Ultrasound Image Storage	1.2.840.10008.5.1.4.1.1.6.1		
Secondary Capture Image Storage	1.2.840.10008.5.1.4.1.1.7		
Multi-frame Single Bit Secondary Capture Image Storage	1.2.840.10008.5.1.4.1.1.7.1		
Multi-frame Grayscale Byte Secondary Capture Image Storage	1.2.840.10008.5.1.4.1.1.7.2		
Multi-frame Grayscale Word Secondary Capture Image Storage	1.2.840.10008.5.1.4.1.1.7.3		
Multi-frame True Color Secondary Capture Image Storage	1.2.840.10008.5.1.4.1.1.7.4		
Stand-alone Overlay Storage	1.2.840.10008.5.1.4.1.1.8		
Stand-alone Curve Storage	1.2.840.10008.5.1.4.1.1.9		
12-Lead ECG Waveform	1.2.840.10008.5.1.4.1.1.9.1.1		
General ECG Waveform	1.2.840.10008.5.1.4.1.1.9.1.2		
Ambulatory ECG Waveform	1.2.840.10008.5.1.4.1.1.9.1.3		
Hemodynamic Waveform	1.2.840.10008.5.1.4.1.1.9.2.1		

Cardiac Electrophysiology Waveform	1.2.840.10008.5.1.4.1.1.9.3.1		
Basic Voice Audio Waveform	1.2.840.10008.5.1.4.1.1.9.4.1		
Stand-alone Modality LUT Storage	1.2.840.10008.5.1.4.1.1.10		
Stand-alone VOI LUT Storage	1.2.840.10008.5.1.4.1.1.11		
Grayscale Softcopy Presentation State Storage	1.2.840.10008.5.1.4.1.1.11.1		
X-Ray Angiographic Image Storage	1.2.840.10008.5.1.4.1.1.12.1		
X-Ray Radiofluoroscopic Image Storage	1.2.840.10008.5.1.4.1.1.12.2		
Nuclear Medicine Image Storage	1.2.840.10008.5.1.4.1.1.20		
Key Image Object Storage SOP Class	1.2.840.10008.5.1.4.1.1.88.59		
VL Endoscopic Image Storage	1.2.840.10008.5.1.4.1.1.77.1.1		
Video Endoscopic Storage SOP Class	1.2.840.10008.5.1.4.1.1.77.1.1.1		
VL Microscopic Image	1.2.840.10008.5.1.4.1.1.77.1.2		
VL Slide	1.2.840.10008.5.1.4.1.1.77.1.3		
VL Photographic Image Storage	1.2.840.10008.5.1.4.1.1.77.1.4		
Ophthalmic Photography IOD 8 Bit Image Storage	1.2.840.10008.5.1.4.1.1.77.1.5.1		
Ophthalmic Photography IOD 16 Bit Image Storage	1.2.840.10008.5.1.4.1.1.77.1.5.2		
Stereometric Relationship Image Storage	1.2.840.10008.5.1.4.1.1.77.1.5.3		
Basic Text SR	1.2.840.10008.5.1.4.1.1.88.11		
Enhanced SR	1.2.840.10008.5.1.4.1.1.88.22		
Comprehensive SR	1.2.840.10008.5.1.4.1.1.88.33		
Key Image Object Storage SOP Class	1.2.840.10008.5.1.4.1.1.88.59		
Encapsulated PDF Storage SOP Class	1.2.840.10008.5.1.4.1.1.104.1		
Positron Emission Tomography Image	1.2.840.10008.5.1.4.1.1.128		

Storage			
Standalone PET Curve Storage	1.2.840.10008.5.1.4.1.1.129		
RT Image Storage	1.2.840.10008.5.1.4.1.1.481.1		
RT Dose Storage	1.2.840.10008.5.1.4.1.1.481.2		
RT Structure Set Storage	1.2.840.10008.5.1.4.1.1.481.3		
RT Beams Treatment Record Storage	1.2.840.10008.5.1.4.1.1.481.4		
RT Plan Storage	1.2.840.10008.5.1.4.1.1.481.5		
RT Brachy Treatment Record Storage	1.2.840.10008.5.1.4.1.1.481.6		
RT Treatment Summary Record Storage	1.2.840.10008.5.1.4.1.1.481.7		

5.7. Verification AE

5.7.1. SOP Classes

The Verification AE provides Standard Conformance to the following SOP classes:

<i>SOP Class Name</i>	<i>SOP Class UID</i>	<i>SCU</i>	<i>SCP</i>
Verification	1.2.840.10008.1.1	Yes	Yes

5.7.2. Association Establishment Policies

5.7.2.1. General

The DICOM standard Application context shall be specified.

<i>Application Context Name</i>	1.2.840.10008.3.1.1.1
---------------------------------	-----------------------

5.7.2.2. Number of Associations

The Verification AE is not internally limited in the number of simultaneous associations it may initiate.

<i>Maximum Number of Simultaneous Associations (initiator)</i>	No Limit
<i>Maximum Number of Simultaneous Associations (acceptor)</i>	100 (default)

5.7.2.3. Asynchronous Nature

Multiple outstanding operations over a single association are not supported.

<i>Maximum Number of Outstanding Asynchronous Transactions</i>	1
--	---

5.7.2.4. Implementation Identifying Information

<i>Implementation Class UID</i>	2.16.840.1.114444
<i>Implementation Version Name</i>	EXPEDOSVC{x} ⁷

⁷ "{x}" representing the application version number. E.g. "2.7.0.6"

5.7.3. Association Initiation by Real World Activity

5.7.3.1. Activity—Request Verification

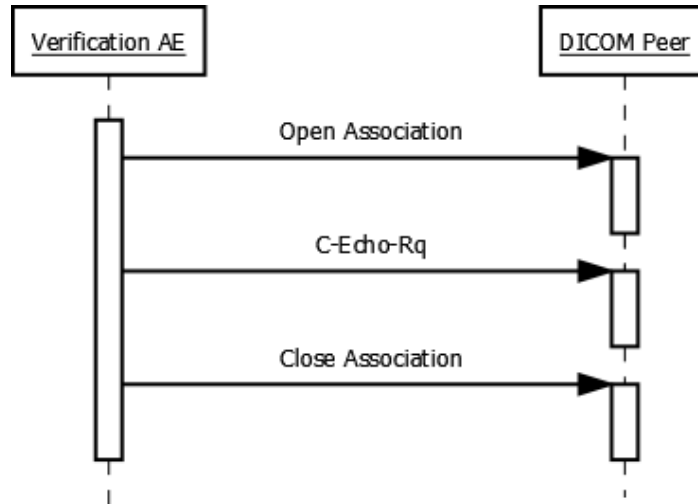


Figure 5.6—Request Verification Activity

Table 5.19 <i>Proposed Presentation Contexts</i>					
Abstract Syntax		Transfer Syntax		Role	Ext. Neg.
Name	UID	Name	UID		
Verification	1.2.840.10008.1.1	Implicit VR Little Endian	1.2.840.10008.1.2	SCU	None

5.7.4. Association Acceptance for Real World Activity—Accept Verification

The Verification AE accepts associations from remote AEs offering valid Presentation Contexts to fulfill the Accept Verification activity.

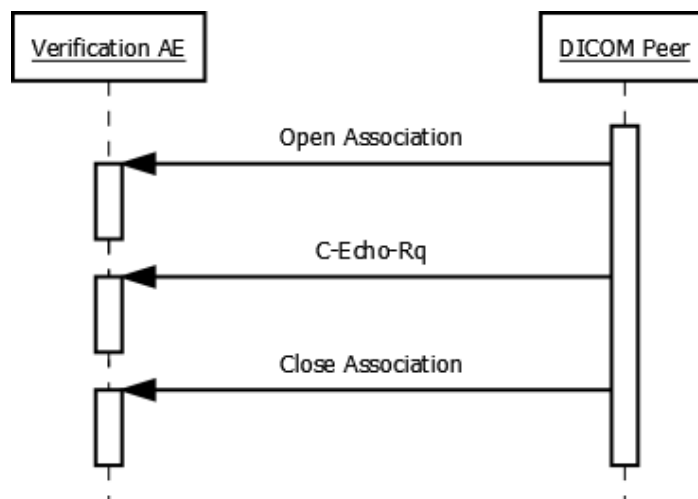


Figure 5.7—Accept Verification Activity

5.7.4.1. Accepted Presentation Contexts

Table 5.20
Accepted Presentation Contexts

Abstract Syntax		Transfer Syntax		Role	Ext. Neg.
Name	UID	Name	UID		
Verification	1.2.840.10008.1.1	Implicit VR Little Endian	1.2.840.10008.1.2	SCP	None
		Explicit VR Little Endian	1.2.840.10008.1.2.1	SCP	None
		Explicit VR Big Endian	1.2.840.10008.1.2.2	SCP	None
		JPEG Process 1 Baseline	1.2.840.10008.1.2.4.50	SCP	None
		JPEG Process Ext 24	1.2.840.10008.1.2.4.51	SCP	None
		JPEG Process 14 Lossless	1.2.840.10008.1.2.4.57	SCP	None
		JPEG Process 14 Lossless SV1	1.2.840.10008.1.2.4.70	SCP	None
		JPEG Lossless	1.2.840.10008.1.2.4.80	SCP	None
		JPEG Near Lossless	1.2.840.10008.1.2.4.81	SCP	None
		JPEG 2000 Near Lossless	1.2.840.10008.1.2.4.90	SCP	None
		JPEG 2000	1.2.840.10008.1.2.4.91	SCP	None
		MPEG 2	1.2.840.10008.1.2.4.100	SCP	None

6. Communication Profiles

6.1. Supported Communication Stacks

DICOM Upper Layer over TCP/IP as defined by part 8 of the DICOM standard is supported.

6.2. TCP/IP Stack

The TCP/IP stack is inherited from the underlying host operating system.

6.3. API

The application makes use of the Windows Socket 2 interface.

6.4. Physical Media Support

Any physical medium supported by the host operating system can be used.

7. Support of Extended Character Sets

The eXpedo Application Suite supports the ISO_IR 100 (ISO/IEC 8859-1) character set.

8. Configuration

Configuration of the eXpedo Application Suite may be accomplished through the Windows client or by editing the underlying XML documents.

8.1. Configurable Parameters

8.1.1. Host Configuration

- Port number
- Binding address
- Maximum PDU size
- Maximum concurrent accepted connections
- Send/Receive buffer size
- Receive timeout
- Socket linger
- Socket keep-alive

8.1.2. Storage SCP AE

- AE Title
- Originator timeout

8.1.3. Query and Retrieve SCU AE

- AE Title

8.1.4. Query and Retrieve SCP AE

- AE Title

8.1.5. Peer Configuration

- AE title
- IP address
- Port number

9. Security

9.1. Security Profiles

The DICOM DISC Writer AE provides standard conformance to the Basic DICOM Media Security Profile.

9.2. Association Level Security

The eXpedo local store is secured against an acceptable peer list.

9.3. Application Level Security

Clients of the eXpedo Application Suite are secured with password protected user accounts.